

Oxford Properties Group

Global highlights

1960
Founded

\$60B
Assets Under Management*

~100M SF
Portfolio

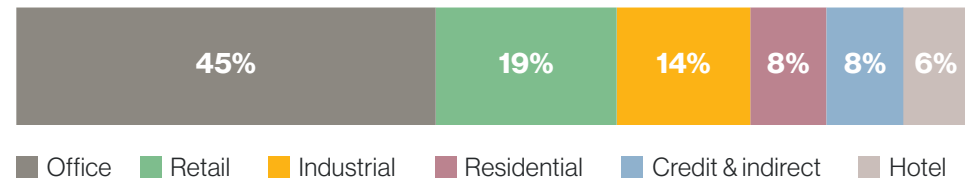
\$20B
Partner capital*

10%+
5, 10, 20 year average returns

We invest in, develop and manage some of the world's most transformative places. We have a diverse team working across four continents in cities like London, New York, San Francisco, Singapore, Sydney and Toronto. Our competitive advantage lies in combining our global platform and expertise with local teams and experience to create exceptional value.

~400
Assets

Assets, % of invested capital



9
Countries**

Global footprint, % of invested capital



Today we invest in, develop and manage 100 million square feet of office, industrial, retail, hotel and multi-family property across four continents.



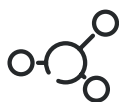
Purpose-driven profit

We invest in exceptional real estate and create long-term value and community impact.



Robust capabilities

We have an unwavering focus on places and people, and that focus creates value that extends well beyond our physical footprint.



Building connections

From single properties to city-defining mixed-use districts, we reimagine places with an emphasis on people.



Empowering culture

Our team's rich, diverse experience allows us to embrace the complex and work with speed, agility and creativity.

Oxford is owned by OMERS, one of Canada's largest defined benefit pension plans.

Our executive team



Michael Turner
President



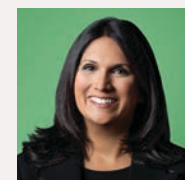
Allison Wolfe
Chief Financial Officer and Global Head of Portfolio Management



Alysha Valenti
Executive Vice President & Chief Legal Officer



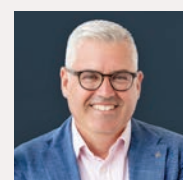
Chad Remis
Executive Vice President, North America



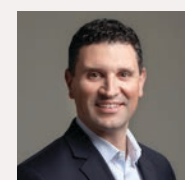
Claire Santamaria
Head of Human Resources



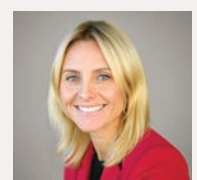
David Matheson
Executive Vice President, Europe and Asia-Pacific



Dean Hopkins
Executive Vice President & Chief Operations Officer



Eric Plesman
Executive Vice President, North America



Joanne McNamara
Executive Vice President, Europe and Asia-Pacific